

The Willow 2253



Elevation A4
Full Porch & Overhang



Elevation A5
Full Porch & Overhang



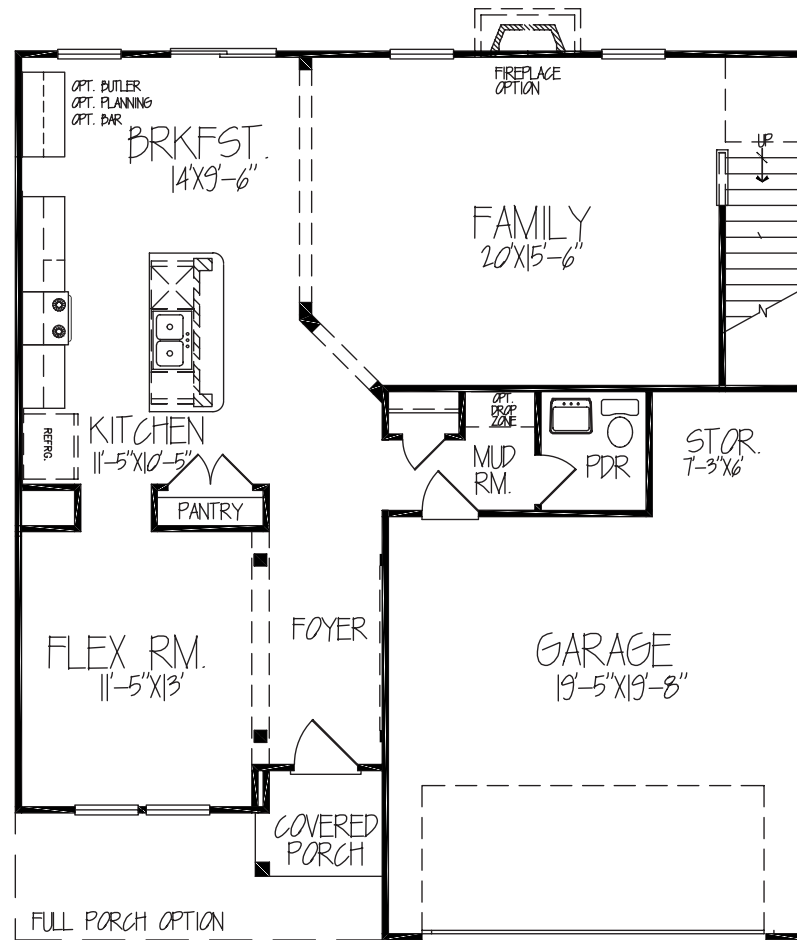
Elevation A6
Full Porch & Overhang



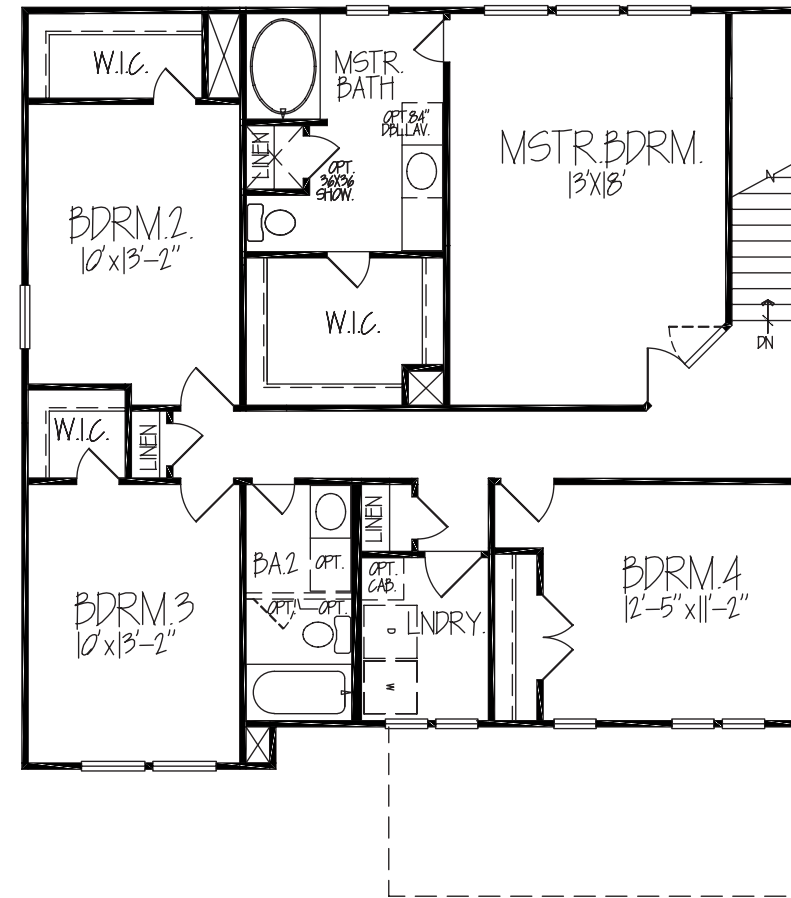
Home and community information, including pricing, included features, terms, availability and amenities, are subject to change at any time without notice or obligation. Pictures, photographs, video, square footages, floor plans, elevations and features are approximate for illustration purposes only and will vary from the homes as built. Images do not reflect a racial or ethnic preference. Nothing on our Website should be construed as legal, accounting or tax advice. Incentives and seller contributions may require the use of certain lenders or title companies. Not all people will qualify for all offers. Please consult an Accent Homes Sales Advisor and review an Accent Homes Carolinas home sales contract for additional information, privacy policy, disclosures and disclaimers.

The Willow 2253

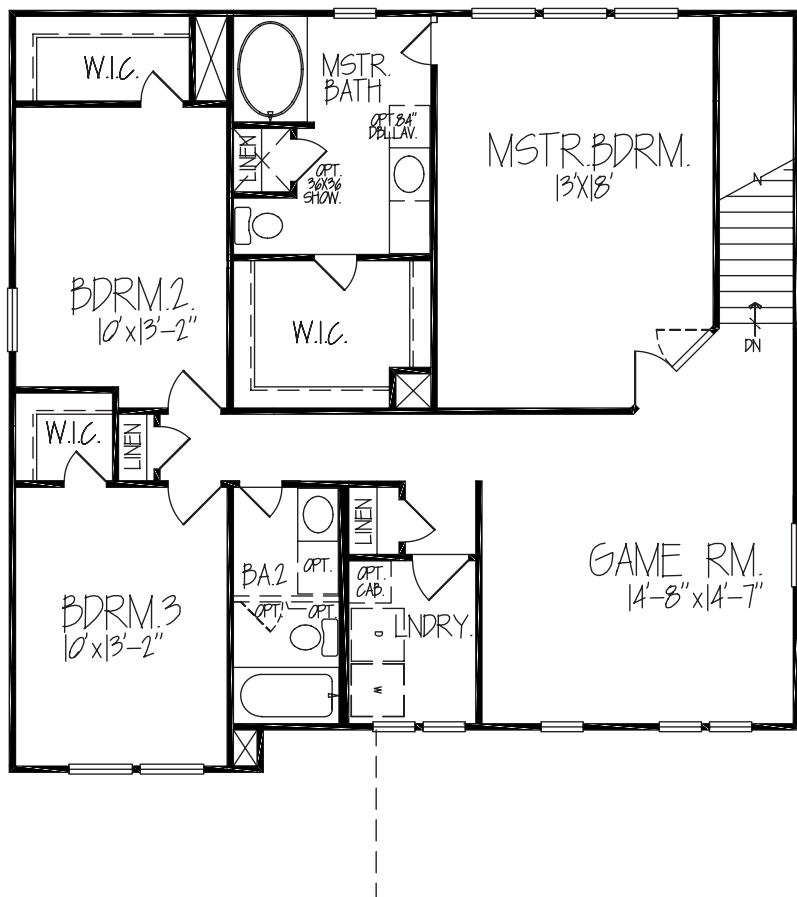
Simply More For Less.



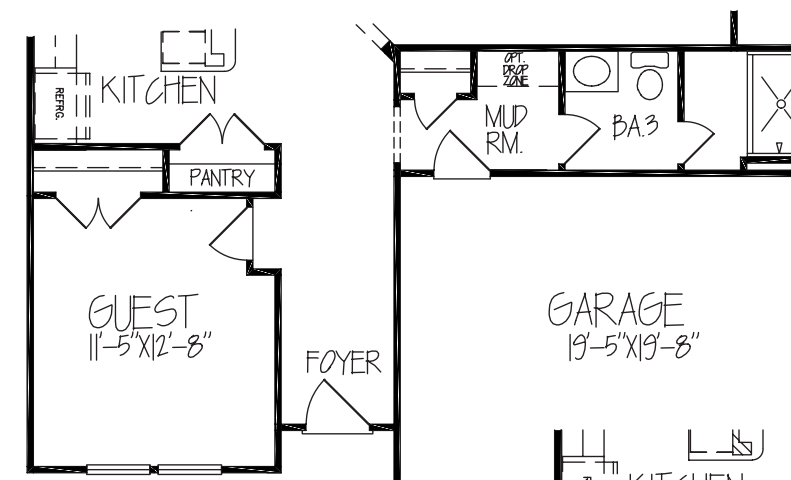
First Floor



**Second Floor
4 Bedroom**

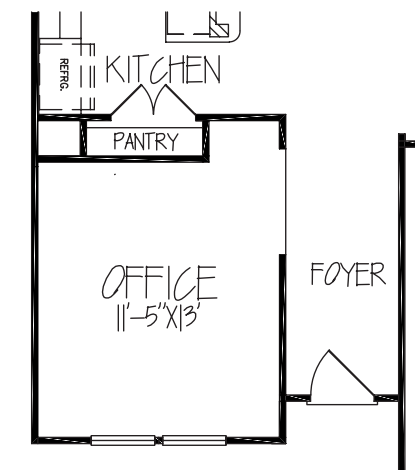


**Second Floor
3 Bedroom with
Gamerom**



First Floor Options

**Guest Suite
Option**



**Home Office
Option**